



VISUAL ART VIRTUAL LEARNING

ART II: MASTERPIECE MONDAY

APRIL 20TH, 2020



LESSON: 04-20-2020

OBJECTIVE/LEARNING TARGET:

Who was Wassily Kandinsky and what did he contribute to the Arts?

Take a closer look at a Famous Artist and their work

Explore a technique or Artist happening somewhere in the world right now!

Figure drawing challenges

Masterpiece Monday

Technique Tuesday

What's Up Wednesday

Thumbnail Thursday

Figure Friday

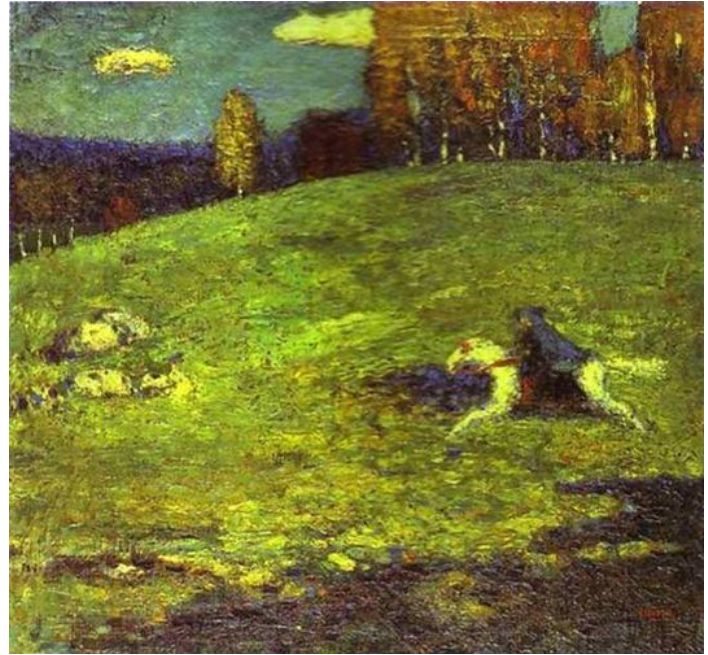
Practice Skills Known and new techniques

Small, loose sketches of objects we find or design concepts

WASSILY KANDINSKY: 1866-1944

- Kandinsky was born in Russia, he studied to be a lawyer early in life and it was not until later (when he was 30) that he decided to devote himself to something he had always had an interest in: being an artist.
- His artistic medium of choice was painting and he is often considered to be a key influence in the movement of modern abstract expressionism in art of the 20th century
- Throughout his life, Kandinsky was known to be fond of color, believing that it often had a life of it's own and could be used in expressing both sound and emotion

WASSILY KANDINSKY



Probably the most important early Kandinsky painting is *The Blue Rider*, which was painted in 1903. He shows the horseback rider more as a series of blurred colors, rather than of specific details. While the painting itself is not that exceptional, it does express his fondness of color.

10 FACTS TO
KNOW ABOUT
WASSILY
KANDINSKY

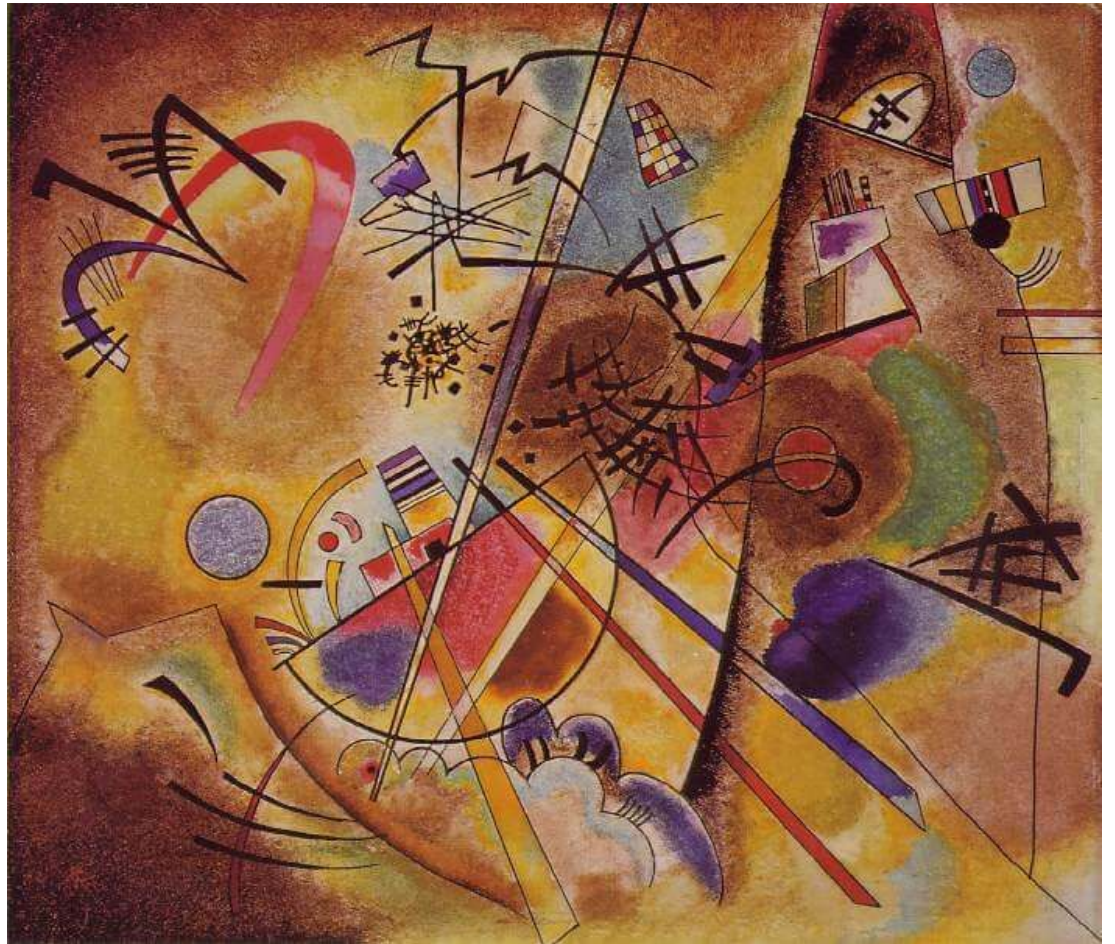


<https://www.youtube.com/watch?v=AaviUsz2r9M>

ART VOCABULARY

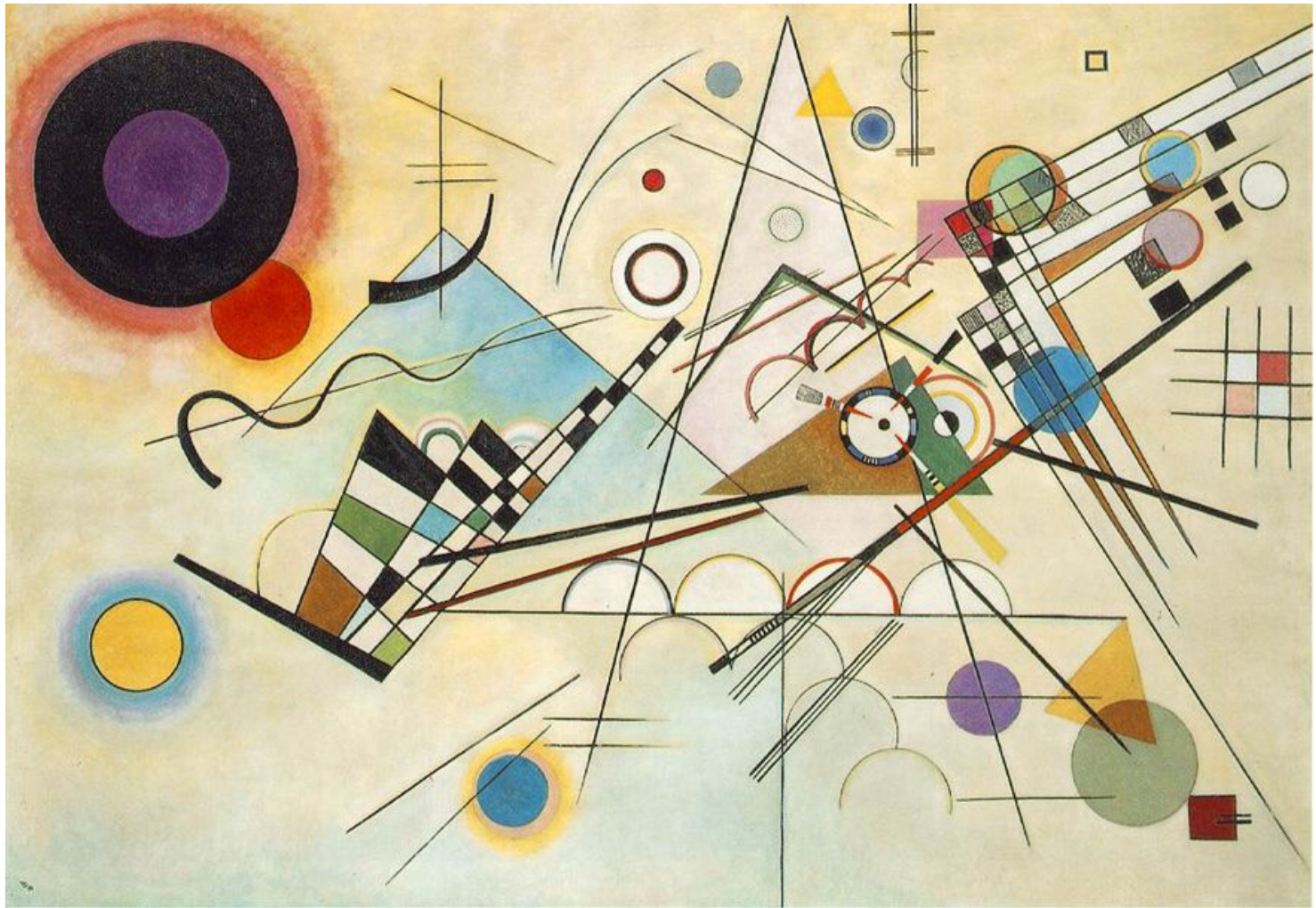
Abstract art: artworks which stress the importance of the elements and principles of design rather than subject matter. Abstract artists select and exaggerate or simplify the forms of the world around them.

Ragans, Rosalind. *Art Talk*. W. Ross MacDonald School Resource Services Library, 2017.



Small Dream in Red, 1925





ADDITIONAL RESOURCES

<https://www.nationalgalleries.org/art-and-artists/artists/wassily-kandinsky>

<https://www.wassily-kandinsky.org/>

<https://www.britannica.com/biography/Wassily-Kandinsky>



POSTERS WE USE TO
TEACH YOU...

ELEMENTS & PRINCIPLES OF ART

LINE

Line is the path of a point moving through space



PATTERN

Pattern refers to the repetition or reoccurrence of a design element, exact or varied, which establishes a visual beat.



SHAPE / FORM



Shape implies spatial form and is usually perceived as two-dimensional. Form has depth, length, and width and resides in space. It is perceived as three-dimensional.

RHYTHM / MOVEMENT

Rhythm or movement refers to the suggestion of motion through the use of various elements.



COLOR

Colors all come from the three primaries and black and white. They have three properties – hue, value, and intensity.



PROPORTION / SCALE

Proportion is the size relationship of parts to a whole and to one another. Scale refers to relating size to a constant, such as a human body.



VALUE

Value refers to relative lightness and darkness and is perceived in terms of varying levels of contrast.



BALANCE

Balance is the impression of equilibrium in a pictorial or sculptural composition. Balance is often referred to as symmetrical, asymmetrical, or radial.



TEXTURE

Texture refers to the tactile qualities of a surface (actual) or to the visual representation of such surface qualities (implied).



UNITY

Unity is achieved when the components of a work of art are perceived as harmonious, giving the work a sense of completion.



SPACE / PERSPECTIVE

Space refers to the area in which art is organized. Perspective is representing a volume of space or a 3-dimensional object on a flat surface.



EMPHASIS

Emphasis refers to the created center of interest, the place in an artwork where your eye first lands.



HOW TO SHOW US
YOUR
CREATIONS...

We'd love to see your
work!!!

Email your art teacher and
be sure to tag your
principal as well.

abigail_gordon
@idschools.org